



April 2011
Newsletter

Nb

www.sallymosley.co.uk

mail@sallymosley.co.uk

01629 814108/07989 622692

<p>Sunday April 17th 'The Padley Pilgrimage' Approx 6 mile walk from Hathersage incorporating an exclusive tour and talk at historic Padley Chapel £10</p>	<p>Tuesday April 26th 'Sally & The Station Walk - Beautiful Bakewell' Approx 3.5 miles around Bakewell ending with tea and a slice of cake at Hassop Station £9</p>	<p>Wednesday April 27th 'In Search of Little John' A 6 mile walk from The Maynard at Padley to Hathersage (part of the Peak District Walking Festival) inc tea/coffee + lunch! £10</p>	<p>Sunday May 1st 'Hopping Back in Time' Sponsored by the Camping & Caravanning Club for the PDWF, a walk of approx 6 miles around Bradford Dale ONLY £3 PER PERSON</p>	<p>Thursday May 5th 'The Magic of Manifold' Sponsored by the Camping & Caravanning Club for the PDWF, a walk of approx 4 miles around the Manifold Valley ONLY £3 PER PERSON</p>
--	---	--	---	--

(For further information on the above walks please scroll down. You will also find snippets of local interest, a picture quiz, puzzle, snippet of the month, and details on one of my favourite footpaths)

Hello fellow hikers and countryside lovers.

What a glorious month March turned out to be with lots of lovely sunshine and blue skies. I'm convinced that my face is slightly tanned - I'll be getting the Factor 50 out at this rate!

As always I've had lots of lovely walks and talk presentations to keep me occupied. Last week I excelled myself though and notched up 60 miles in less than a week which is not bad going for this mature pair of pins. I even managed to climb Mam Tor twice in one afternoon on a 'double chocolate whammy' walk for a singles group to Castleton. Because the Cocoland chocolate factory is only small I had to divide the group into two and whilst the A-team had their

tour I took the B-team on a climb to the summit of the Shivering Mountain before descending the earthquake-movie closed road. Then the two teams swapped over and I did it all over again! Thankfully my reward was lots of lovely chocolate to eat on the return to Castleton.

My 1 minute and 56 seconds of fame when I appeared on 'The Boat that Guy Built' on BBC 1 was quite amusing and I have not as yet received any stropky letters or emails from The Arkwright Society, thank goodness! There was one mistake I noticed when the camera panned around Cromford & Scarthin and Lisa Tarbuck in her voice-over commented on the fact that Arkwright built a church in the village. However, that particular shot was of the former Methodist Chapel on Water Lane instead of Arkwright's Church down by the river. Other than that, I think it was relatively correct. The programme is certainly attracting a wide audience - even my grandchildren are watching and finding it entertaining.



Everywhere is bursting into life here in Derbyshire with shoots of fresh growth and emerging blossom. Has anyone noticed how many blackbirds there seems to be this year? What an aggressive lot they are as well, chasing each other from bush to bush and tree to tree!

Talking of birds, I was walking near Hartington Station last week and saw a pair of peregrine falcons on the edge of a disused quarry. Their sharp shrill cry is especially distinctive and I stood transfixed for several minutes.

The latest news on the Monsal Trail tunnels being opened is that it has been delayed and might not be until May/June. Please also note that sections of the Cromford Canal will be closed for resurfacing work for a while and the aqueduct where the canal crosses over the Derwent is likely to be closed until late summer for repairs. However, diversionary routes will be offered.

I heard some sad news this week - the Motorcycle Museum at Bakewell is likely to close at the end of the season and the private collection sold off. Anybody wanting to see this amazing attraction of early motorcycles and assorted

memorabilia had better do so soon (very restricted opening times apply - telephone 01629 815011 to find out when and for further details).

I had an afternoon out in Ashbourne this week and was so impressed by all the wonderful small shops and the character of the town centre which is an architectural gem. I tend to go in Buxton direction quite a lot as I love the old spa buildings and the Pavilion Gardens as well as dependable and affordable Morrison's supermarket to stock up on food and provisions. However, I might head south a bit more often as the mellow red brick and the little ginnels and alleyways of Ashbourne are far warmer than the exposed and elevated streets of chilly Buxton.



Talking of chilly, there is a saying in the Peak District that there is always a possibility of late snow until Flagg Races has been and gone. Traditionally held on Easter Tuesday, Flagg Races dates back to 1892 and is Derbyshire's answer to The Grand National! It is actually a series of point-to-point races across open countryside and fields of pasture on Flagg Moor over walls, fences and hurdles. The livestock are temporarily removed for the day and a field car park is accessed from the A515. Stalls, bars and stands are set up on a grassy bank overlooking the 'racecourse' and some serious betting and swilling of ale often takes place. With Easter being so late this year, it is highly unlikely that sleet and snow will be forecast, but then again this is England we are talking about!

Forthcoming Walks

If you are interested in booking onto any of the following walks or would like to know more, please do not hesitate to phone 01629 814108/07989 622692 or email me at mail@sallymosley.co.uk.

Sunday 17th April - 'The Padley Pilgrimage' Tucked away beside the wooded slopes of Padley Gorge is an ancient chapel steeped in history but with a tragic story to tell of the Padley Martyrs. We meet at the bottle bank car park opposite the swimming pool in Hathersage at 9.45 with a view to setting off at 10am. The walk to Padley is along a scenic riverside path which forms part of the Derwent Valley Heritage Way. Our route will be carpeted with spring flowers as we head up through mature woodland on old paths to Padley Chapel for an exclusive tour and talk by custodian Celia White who tells the fascinating history of this amazing building. Prepare to be spellbound! Afterwards we will continue along the track to pass the entrance to Totley Tunnel and a chance to visit the 'Brief Encounter' café at Grindleford Station. The return to Hathersage is elevated to appreciate and admire the stunning and far reaching views towards Dark Peak hills which surround the Hope Valley. **£10 per person to include the tour and talk at Padley**

Tuesday 26th April - 'Sally & The Station Walk' (Beautiful Bakewell) We meet at Hassop Station at 2pm for a leisurely afternoon stroll of approximately 3.5 miles along part of an old Roman road, and a section of the Monsal Trail to enjoy a town tour of Bakewell with interesting snippets along the way of local history, fascinating facts and a bit of gossip! On returning to Hassop Station your reward will be a scrumptious slice of cake with tea/coffee. **£9 per person to include refreshments**

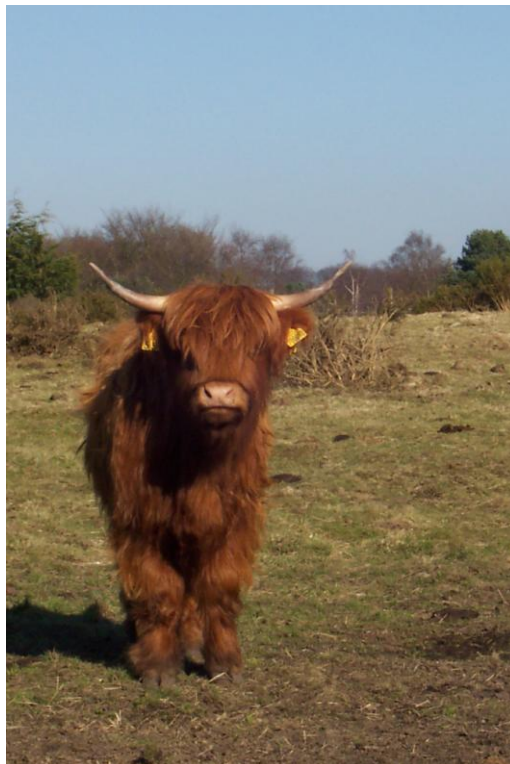
Wednesday 27th April - 'The Maynard Dog Walk - In Search of Little John' This walk of approximately 6 miles is being sponsored by The Maynard at Grindleford and forms part of the 2011 Peak District Walking & Outdoors Festival. It starts at the hotel at 10am and heads through Padley to Hathersage to visit the grave of Little John of Robin Hood fame. We will walk along a section of riverside path as well as through a wonderful wood which hopefully will by then be carpeted with bluebells. Heading up towards the moors and the rugged beauty of Stanage Edge in the distance we follow an old packhorse route and an elevated path to return to The Maynard for either a bowl of walkers' soup and a sandwich or an £8 voucher off a bar/restaurant meal. **All this for just £10 per person! (Booking is strictly through the Walking Festival booking line 01538 483741 or online at www.visitpeakdistrict.com/pdwf)** Places are limited and restricted to adults and children aged 10+.

Sunday 1st May - 'Hopping Back in Time' - This walk of approximately 6 miles is being sponsored by the Camping and Caravanning Club and also forms part of the 2011 PDW&OF. It starts at Hopping Farm Caravan Site near Youlgreave and is not restricted to those staying on site. It is a leisurely stroll around Bradford Dale, packed with interest, scenic beauty, panoramic views and wonderful countryside. **The cost is just £3 per person but must be booked through the Walking Festival booking line as above. Places are limited and booking is essential.**

Thursday 5th May - 'The Magic of Manifold' - Also sponsored by the Camping and Caravanning Club, this leisurely walk of approximately 4 miles starts at Heathy Roods Farm, Butterton and is not restricted to those staying on site. We head through the wonderful Manifold Valley on packhorse paths taking us back in time on a journey of historical snippets amid a picturesque landscape with glorious views. **The cost is just £3 per person but must be booked through the Walking Festival booking line as above. Places are limited and booking is essential.**

For further information, please contact me on either 01629 814108 or 07989 622692

MY FAVOURITE PICTURE OF THE MONTH



I do love taking photos of livestock and this little cutey really caught my eye!

Test your knowledge of the Peak District

Last month's picture puzzle



This strange carved stone beneath the window can be found on the end of a cottage at Hopton. It is thought to depict *George and the Dragon* as the property was at one time an inn of that name. The carving is extremely old, as the house in which this stone and several others has been placed is very early, but it is thought that they were probably reclaimed from an even earlier building, and maybe of an ecclesiastical nature.

This month's picture puzzle



Where can you find this old notice?

TALES FROM THE VISITOR CENTRE

Another kiddy story from one of my duties in Bakewell Visitor Centre - I was serving on the counter when a little girl aged no more than 3 came clutching a 'Shaun the Sheep' sticker book and some money to buy it with. She hardly reached the top of the counter but handed me the money for the book.

Being a fan of Shaun the Sheep I innocently asked her if she watched the programmes on TV. "Yes", she replied "And I play Shaun the Sheep computer games on my laptop!"

A 3-year old with a laptop playing computer games? I was taken aback, but then when I was 3 the telly had only just been invented!!

PEAK DISTRICT QUIZ QUESTIONS

(Answers at the end)

1. Heather Gas - a village anagram (10)
2. How many 'bends' between Bakewell and Baslow? (8)
3. In the grounds of which Hall can you find the Battle Cross? (4)
4. What family do you associate with the former Errwood Hall? (9)
5. Which river runs under Weags Bridge? (8)
6. *Polygonia c-album* - not a full stop? (5)
7. Which bird is said to yaffle? (10)
8. The Roman Fort at Brough (5)
9. The Castleton Mine & Cavern with a boat ride? (9)
10. One time home of Florence Nightingale (3,5)

AN EXTRACT FROM 'ALFIE'S DIARY'

Written in 2007

Monday 16th April 2007

I'm all hot and bothered and can't get my head around this weather. Summer seems to have arrived but I've still got my winter coat on, although I have managed to shake lots of it off - mum is using that noisy sucking machine all the time and I hate it!

If I see mum go under the stairs and reach for the Hoover, I discreetly disappear as far away as possible. She once tried to suck the hairs straight off my back by aiming the nozzle at me - big mistake - I shivered and shook then tiddled on the floor, so she's not done it since!

Mum has been out in the garden most days for the last week or so, taking advantage of the sunshine to tidy up. I get to lie in the shade and watch her with the occasional dig in a border or chew at a stone – until I get shouted at that is. It's lovely to snooze and listen to the birds singing, but yesterday I had the weirdest experience. I was lying under the damson tree which is currently in full bloom and I was dreaming about chasing my gran's cat around the garden. It was lovely and warm with a bit of a breeze and I must have laid there for quite some time. When I awoke and opened my eyes I was horrified to find myself covered in snow flakes – silly me, I was simply coated in blossom.

Got to go now, mum's picked up my lead so we must be off on another walk. Yippee!!! Blooming lovely!!!

Lots of love

Alfie x



SNIPPET OF THE MONTH

The Newhaven Inn to the side of the A515 Buxton to Ashbourne Road may look a bit of a sorry sight these days, although it is very carefully and slowly being restored to its former glory. However, it has the most amazing history:

The Newhaven Inn is situated at the junction of main roads which were laid as turnpike roads in the 18th century, one being the Sheffield to Ashbourne turnpike of around 1759 which joins up with the Nottingham to Newhaven which ascends the Via Gellia and then the Derby to Manchester turnpike of 1738 which is now the A515. Built in the 18th century by the Duke of Devonshire as a coaching inn to accommodate all the travels on these early highways, the Newhaven Inn was originally called the Devonshire Arms.

The 'large, handsome and commodious inn' provided travellers with requisite accommodation and everything that was required to make travelling in these remote parts of the Peak District as comfortable as possible (the equivalent of today's Premier Inn, Travelodge or Best Western!).

When George IV stayed here he found the entertainment so satisfactory that he granted the inn a free and perpetual licence of his own sovereign pleasure vested in the property of the Duke of Devonshire.

The grand stable blocks on the right which are now listed buildings could cater for 100 horses. Its yard would have been filled with stagecoaches from Nottingham, Derby and Manchester and later charabancs and cars. In June 1815 'a new fast chariot' was advertised as a daily service along the road from Matlock to Newhaven continuing on to Buxton the same evening!

Newhaven also stood on a cattle drovers trail and cattle or gig fairs were held here from the 17th century onwards in September and October. It is thought that they continued until the start of the 20th century.

Favourite Footpaths



The above picture is of Lion's Head Rock in Dovedale, just one of a series of wonderful stone features which line this fabulous footpath. The 3 miles or so of riverside path from the famous stepping stones to magical Milldale is famed around the globe and therefore attracts a multitude of walkers.

It is difficult but not totally impossible to enjoy this path all to yourself, but you have to time it right. Forget nice summer days, Bank Holidays and weekends when there is a constant throng of boots on the well worn path and series of wooden barge boards. Go out of season, mid-week and either early in the morning or late on in the evening and you might just be lucky to find yourself alone!

Why is this path so special? Well, besides the wonder of approaching this footpath through a deep gorge overlooked by the heady heights and slitherbank slopes of Bunster Hill and Thorpe Cloud, there are Dovedale Castle, Lovers Leap, The Twelve Apostles, Tissington Spires, Reynard's Cave, Pickering Tor, Ilam Rock and the Dove Holes to pass and admire whilst you wander beside the tumbling clear waters of the wonderful River Dove where dippers bob and curtsy and trout laze.

There are exquisite examples of flora, fauna and ferns as well as ancient woodlands and occasional desiccating stumps which have been turned into the new phenomena of 'money trees' (people use a stone from the river to hammer in coins to the rotting trunk of a fallen tree until it glistens like burnished gold with a coating of bent and twisted coppers - and who says money doesn't grow on trees?).

Songbirds twitter and tweet from the trees whilst high overhead you may see buzzards playing with the thermals. But equally fascinating are the fabulous steps leading up and down from Lovers Leap which contain a myriad of fossils including the 'nuts and bolts' of crinoids. These sea lilies from millions of years ago are also known as Derbyshire screws which describes them perfectly!

Quiz Question Answers

1. Hathersage
2. Thirteen (Thirteen Bends is the name for that section of the B619)
3. Ilam
4. Grimshawe
5. Manifold
6. Comma (the clue was the Latin name for this butterfly)
7. Woodpecker
8. Navio
9. Speedwell
10. Lea Hurst

If you do not wish to receive future newsletters, can you please email me on mail@sallymosley.co.uk and write 'unsubscribe' in the subject line.